

Benvenuto! Effettua l'accesso oppure registrati.

Inserisci il nome utente, la password e la durata della sessione.

News:
[Tour 2012](#)

Indice [Aiuto](#) [Ricerca](#) [Accedi](#) [Registrati](#)

Italianaviation forum » [Varie](#) » [Volo simulato](#) » [VHF Output Sound](#)

[« precedente](#) [successivo »](#)

Pagine: [1]

STAMPA

 **Autore**

I-VALE

Jr. Member



Post: 92

Topic: VHF Output Sound (Letto 4129 volte)



VHF Output Sound

« **il:** Gennaio 30, 2011, 17.54 »

Ciao Ragazzi,

Curiosando sul forum di IVAO™ ho trovato un topic che spiega (con illustrazioni) come modificare la voce ottenendo un effetto di voce VHF.

Di seguito riporto quando scritto nel topic:

Citazione da: Mattias Spiessens - Luglio 09, 2010, 10.39

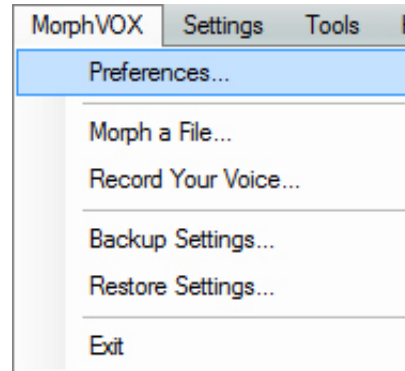
Hello guys,

A lot of people asked me and my friends how I got such a VHF sounding microphone.
That's the reason why I would like to share you my settings and configurations.
Enjoy!

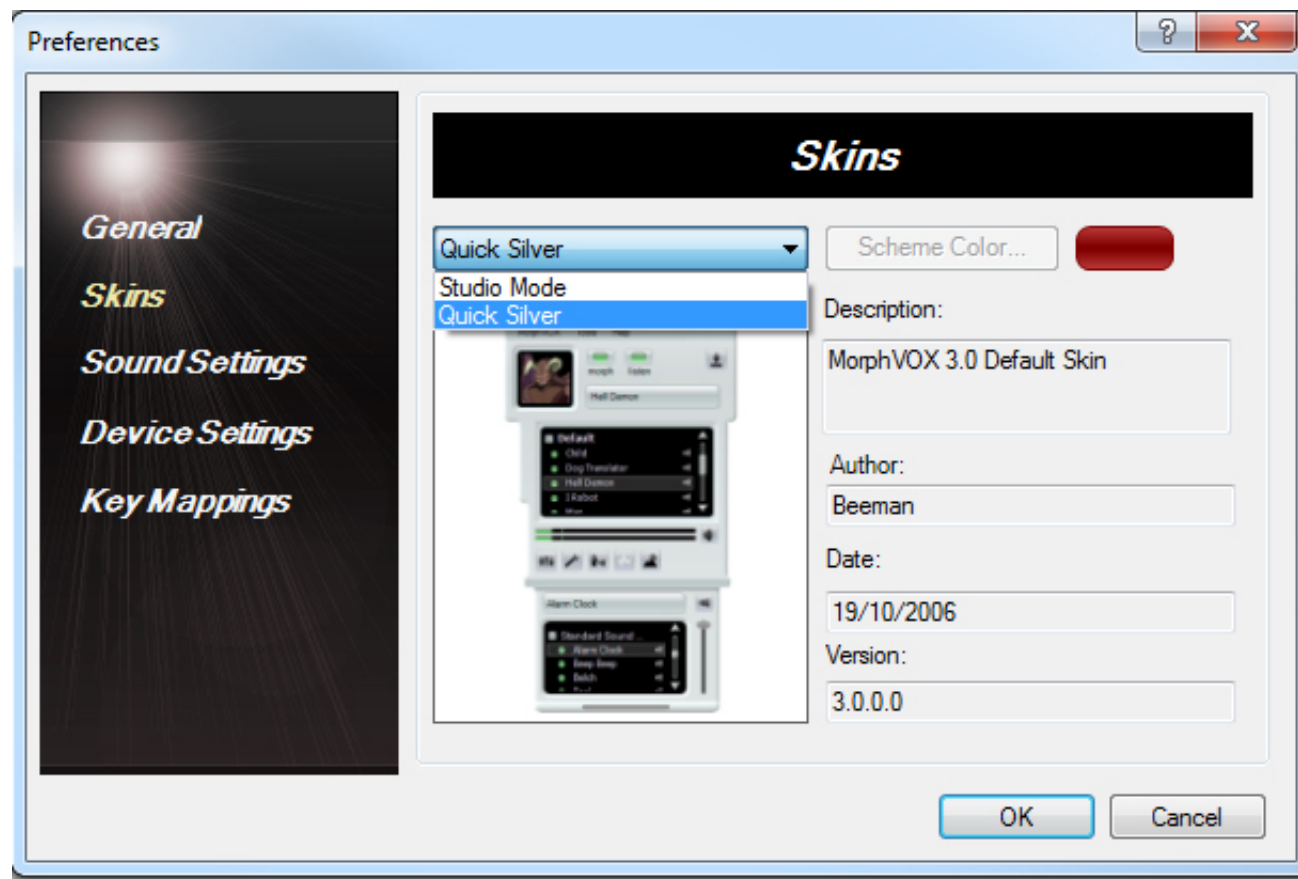
Let's start!

First of all you need the Third-party software called Morphvox (Screaming Bee)

After installing the software you need to configure a few options.
Therefore go to the menu and select preferences.



I'm using the Quick Silver Skin as this is the easiest way to configure everything.



Next step is to configure all the settings I've selected.

- General
- Skins
- Sound Settings
- Device Settings
- Key Mappings

General

Start Up

- Load MorphVOX on startup
- Start Minimized
- Show tip of the day
- Show tray icon
- Auto-Start Voice Doctor
- Always on top

Graphics

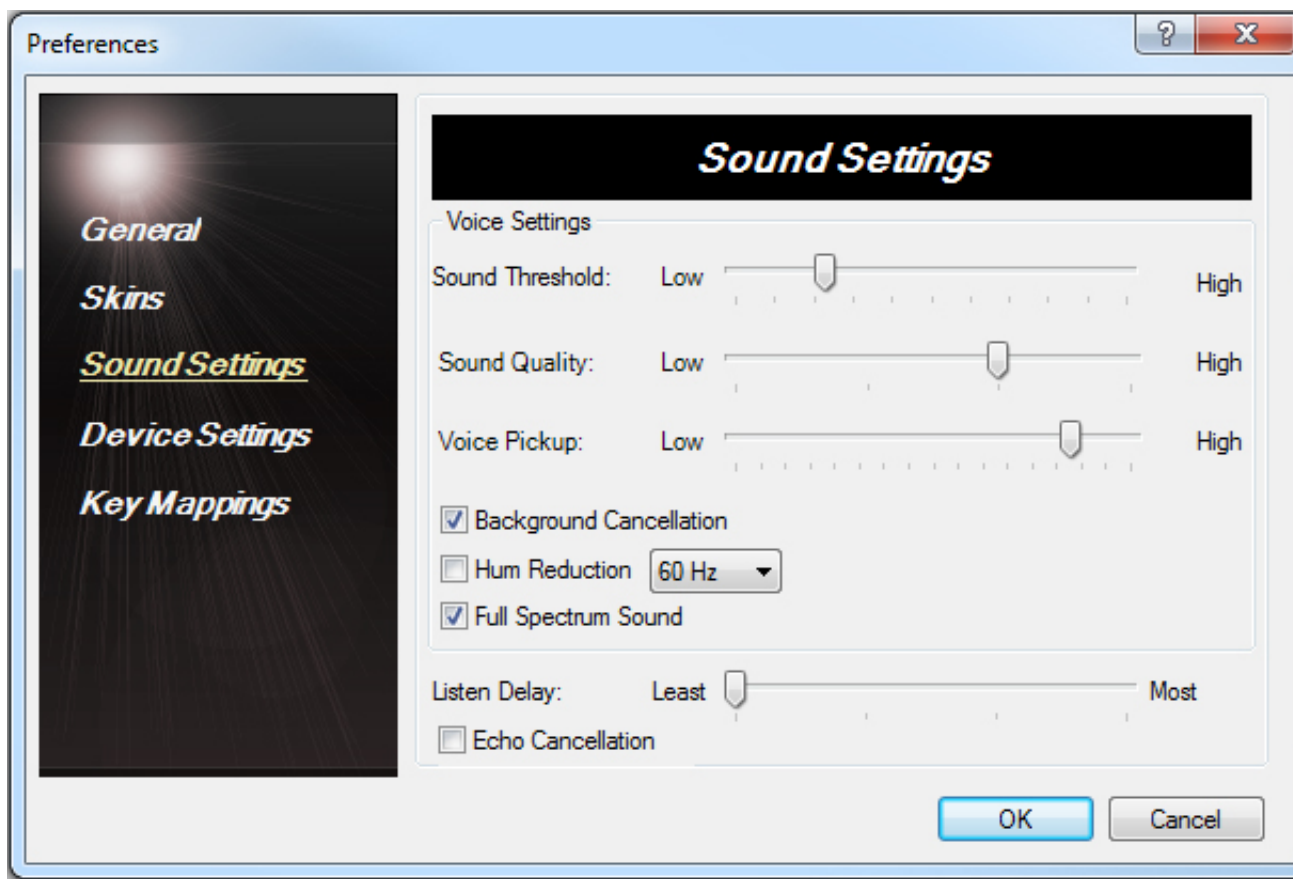
Opacity:

Misc.

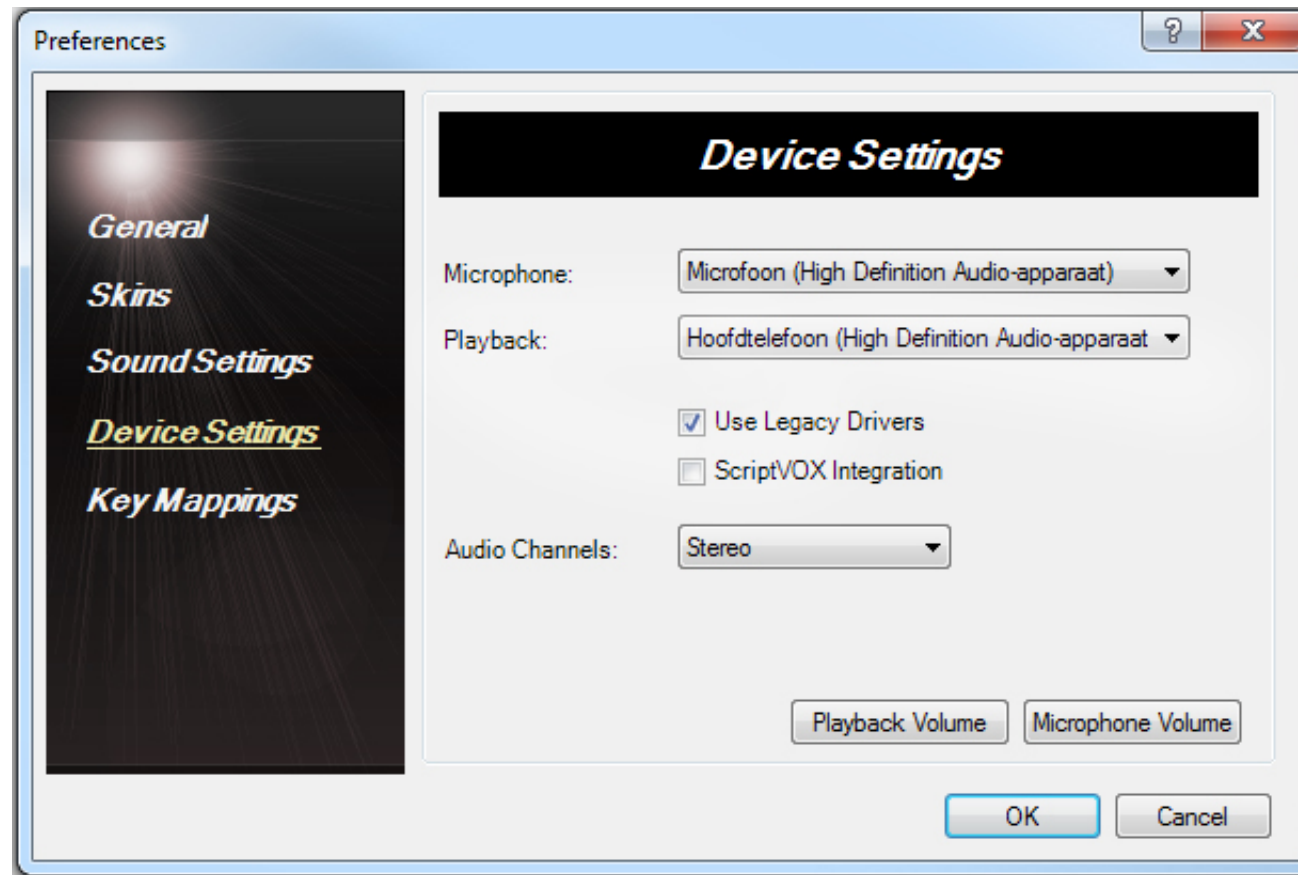
- Use 24 hr clock
- Anounce alias change
- Show Add-On Links

OK

Cancel

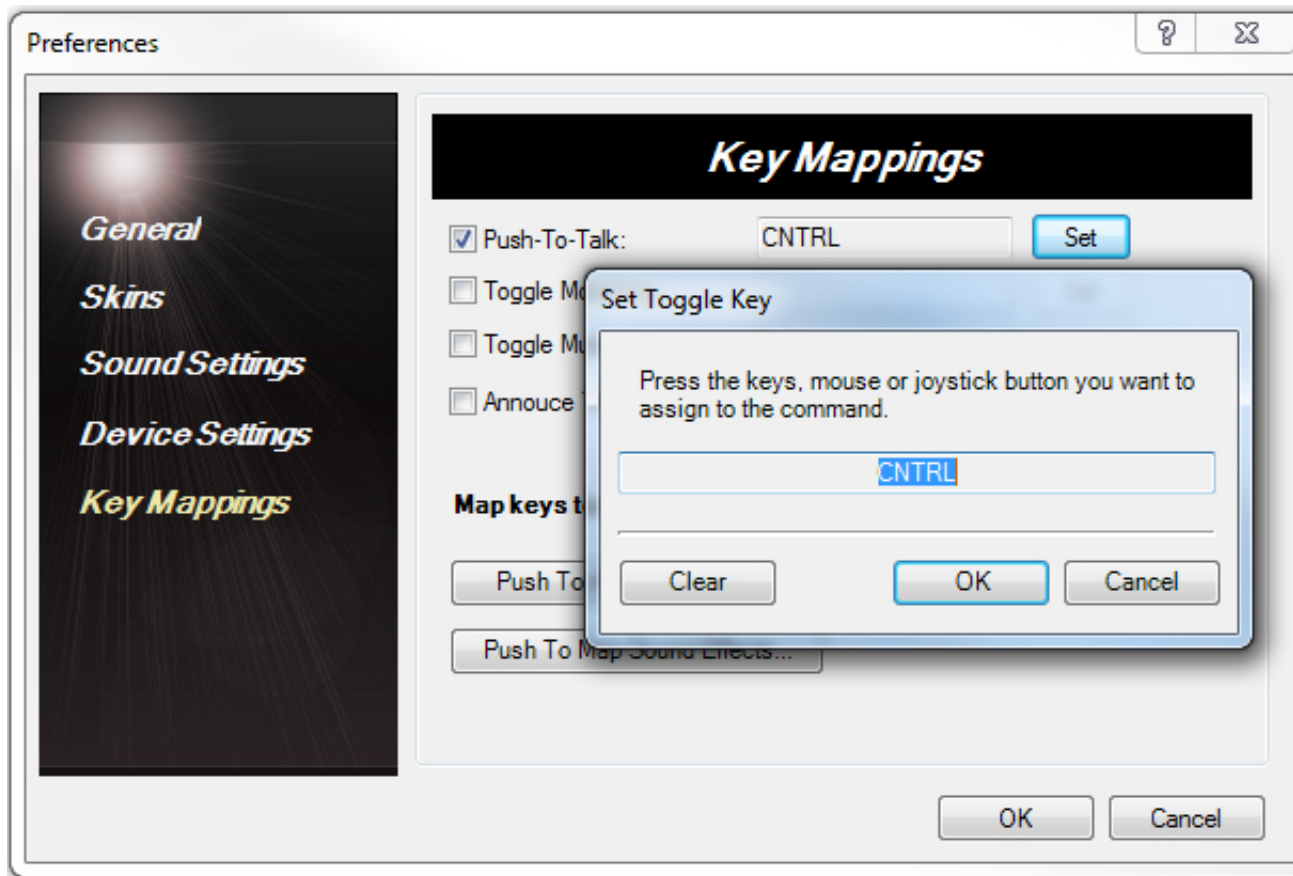


Be sure to check out if you've selected the correct microphone 😊

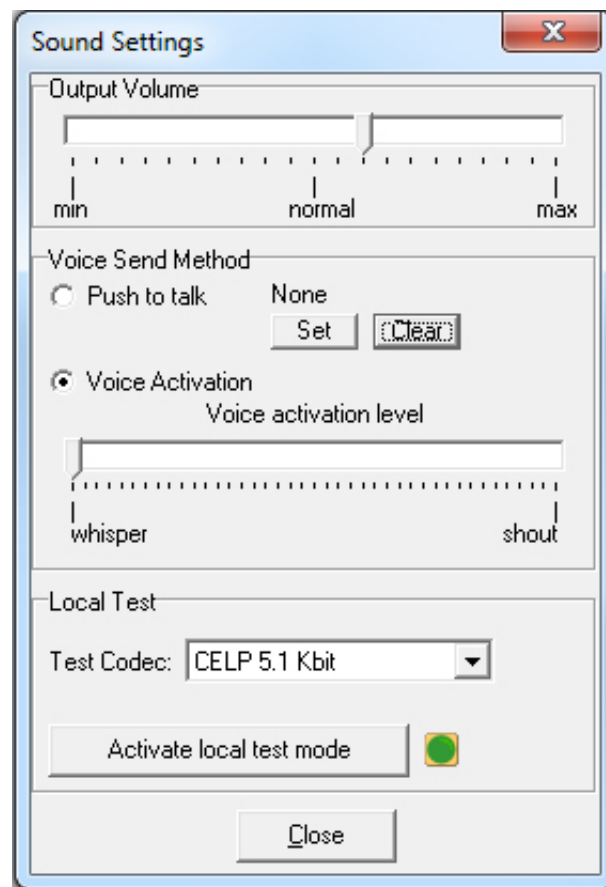


The last thing to do in the preferences is assigning a push to talk key.

You have to use the Morphvox Push-To-Talk function, otherwise you're message will be broken on teamspeak.



It's necessary to disable Push-To-Talk in Teaspeak cause we're already using it in Morphvox.

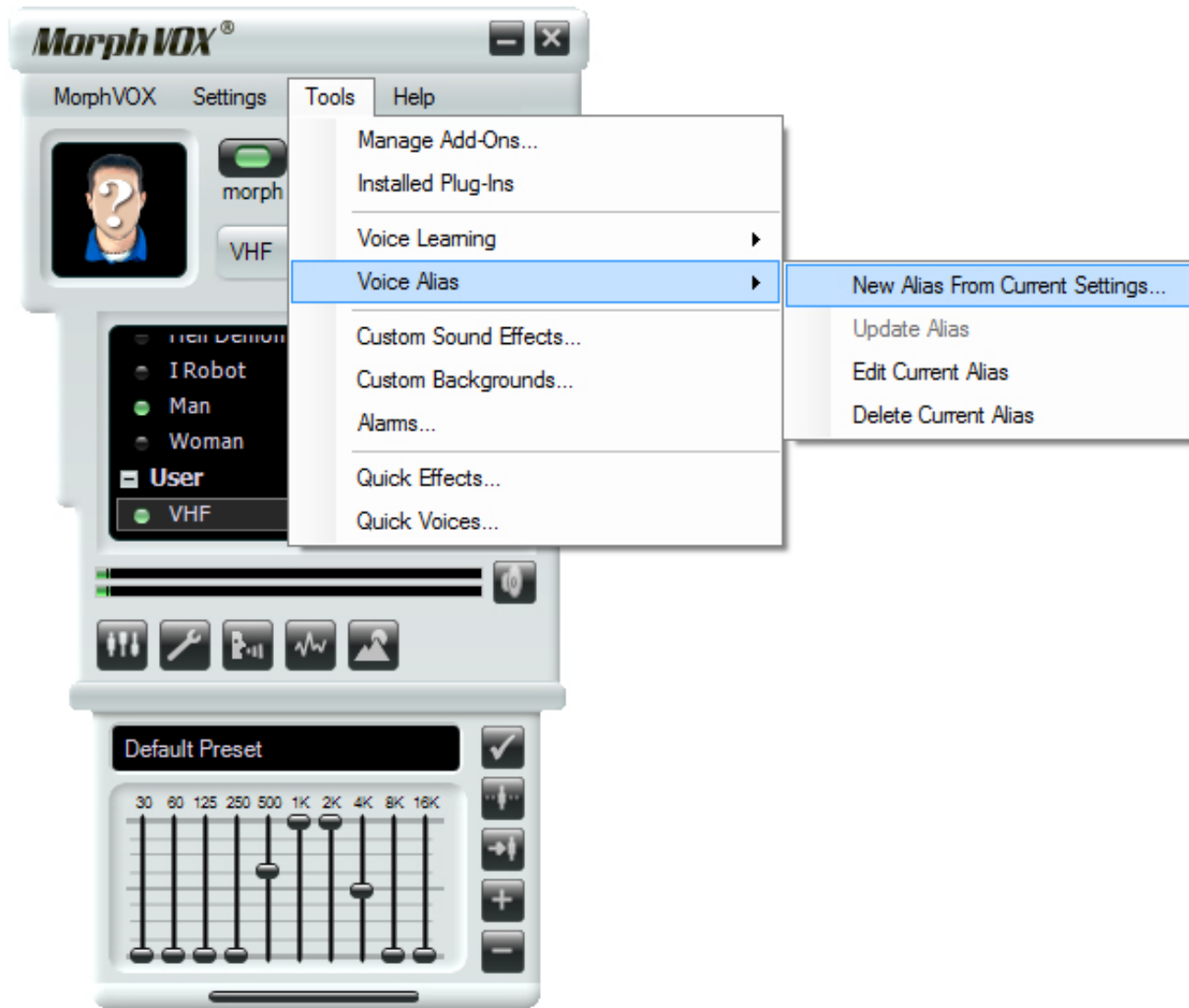


Next step is configuring the Graphic equalizer.

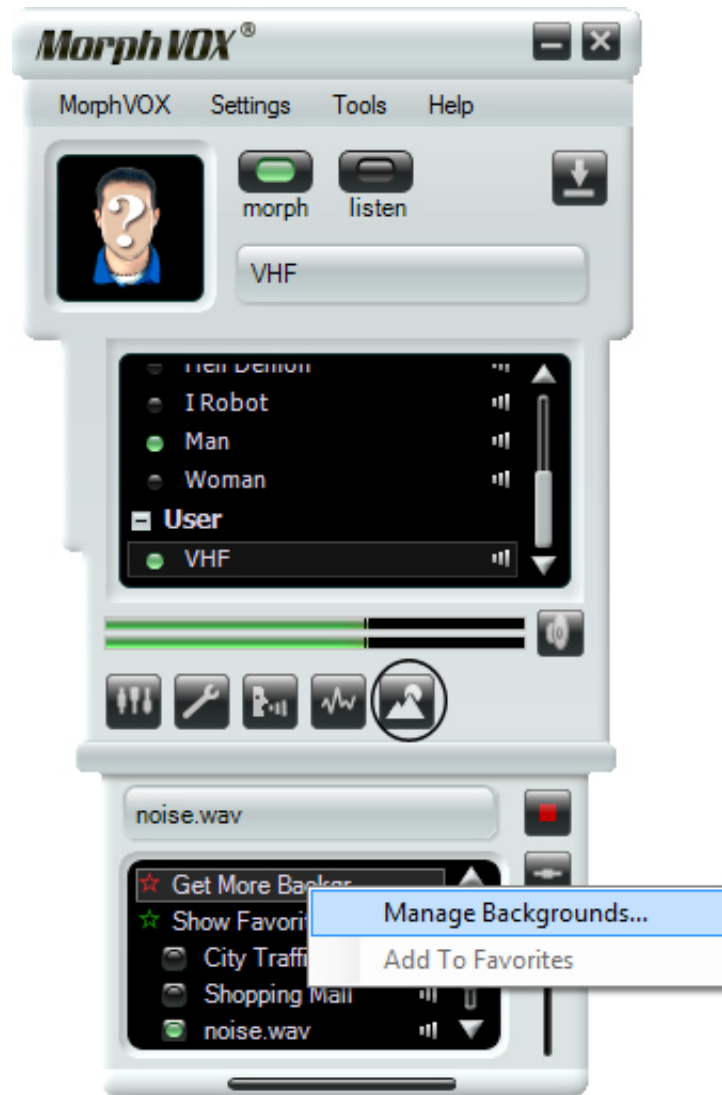


1. Select this key to open the Equalizer
2. Configure the settings as shown on the picture
3. Create a new alias

--> Some people reported problems when creating a new profile. If you experience any problems you can make a profile via the "Tools" menu.



Next step is adding the VHF noise sound.
Some people prefer not to use this because it may cause readability problems if you're using a webcam microphone.



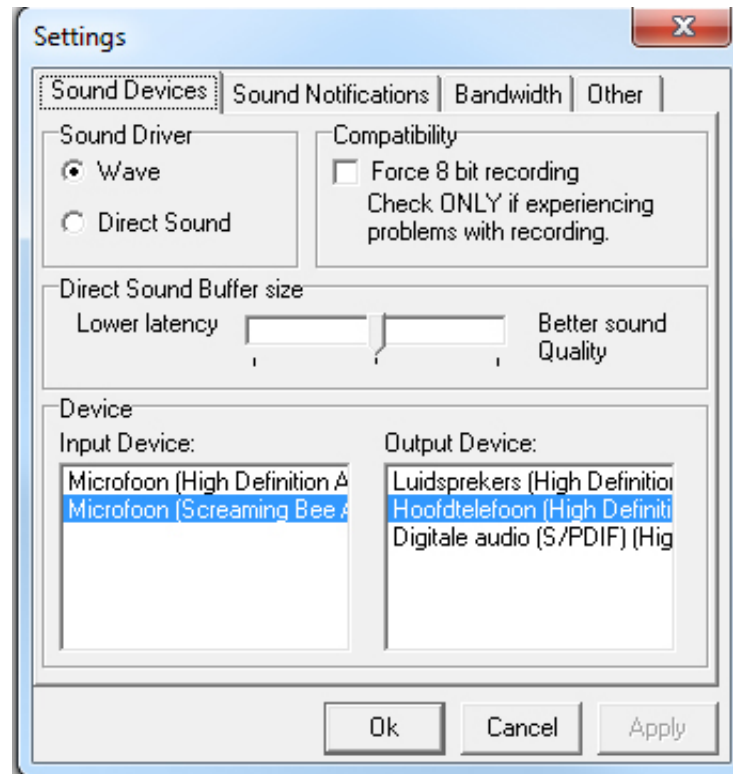
Add the background sound called noise which can be downloaded [here](#)

Make sure you click on play and put the volume on max each time you restart your pc to activate the sound effect.

If anyone knows a better solution to activate it automatically at startup, please inform me.

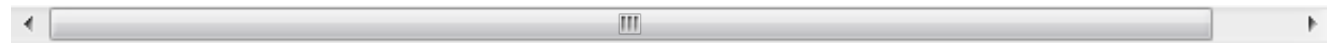


Last step is selecting the correct input/output device
(Input device is always called Screaming bee audio driver)



That's it!

Hope you like it 😊



Fonte: [IVAO™ FORUM](#)

E' Fantastico !!!

*Saluti
Valerio*

 L Connesso

□ **Alessandro Fiorini**



Re: VHF Output Sound

« **Risposta #1** il: Gennaio 30, 2011, 19.47 »

IAA-MC
Administrator
Hero Member



Post: 1049

Italian Aviation Membership
Assistant Coordinator



Wow grazie mille Valerio!!!

 L Connesso

IAA001 Alessandro Fiorini 
Captain, LIPR
Total Flights: 186
Total Hours: 241.15



www.italianaviation.com
powered by phpBB - Italian Aviation

IAA-MC


Italian Aviation Membership Assistant Coordinator
Feel free to contact me in any time if you need help!

Pagine: [1]

STAMPA

« precedente successivo »

Italianaviation forum » Varie » Volo simulato » VHF Output Sound

Vai a: => Volo simulato  vai