

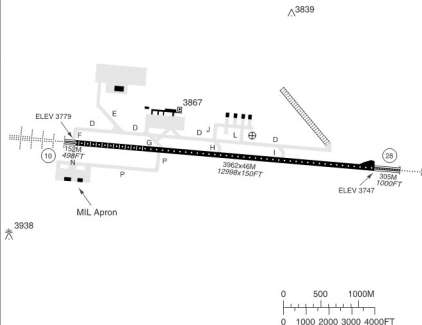
L
U
S
A
K
A

I
N
T
L

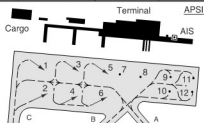
Z
A
M
B
I
A

RWY	QFU	APL	THL	RWL	SLOPE
10	101	H-C a	H	H	-0.2
28	281	H-E b	H	H	+0.2

a PAPI 3.00L
b 612M, PAPI 3.00L



TKOF	RWY	10/28
	CLG/RVR or VIS KM	550/1.5



Parking position coordinates

1, 2 S 15 19.5 E028 26.6
 3 - 7 S 15 19.5 E028 26.7
 8 - 12 S 15 19.5 E028 26.8

AD: 04-22 + O/R
 RFF: CAT B

ACFT in circuit MAX 5000.
 Right hand circuit north of the Great east road
 and clear of Airforce Base.

WARNING
 Watch out for birds.

Circling	
C	4600/3.7 (821)
D	4600/4.6 (821)

Change: PAPI, RFF

L
U
S
A
K
A

I
N
T
L

Z
A
M
B
I
A

LUN - FLLS

5

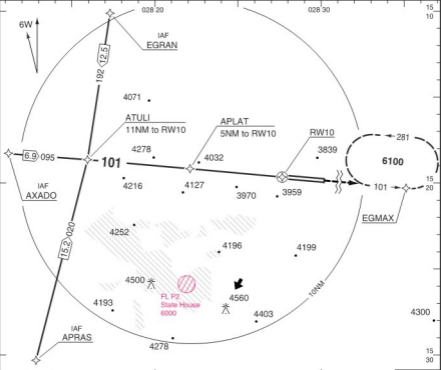
26 FEB 07

(GNSS) RNAV - 10

NEW PANS - OPS

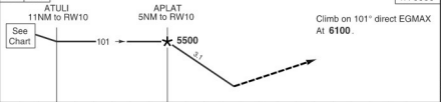
Lusaka
 ATIS 113.500 HAD
 APP 121.300 HAD
 TWR 118.100 HAD
 SRE 120.100 HAD

TCH 50



MAP RW10

TA 6000



NM 13 12 11 10 9 8 7 6 5 4 3 2 1 0 2 3 4 5 6 7 8 NM

STATE	LNAV/VNAV (GNSS)	LNAV (GNSS)
ACFT	C D	C D
MIN	4200 (420)	4290 (481)
VIS-KM	2.3	2.3
APL US	2.3	2.3



Not to be used below 5°C

THR ELEV 3779 FT/AD ELEV 3779 FT Change: New

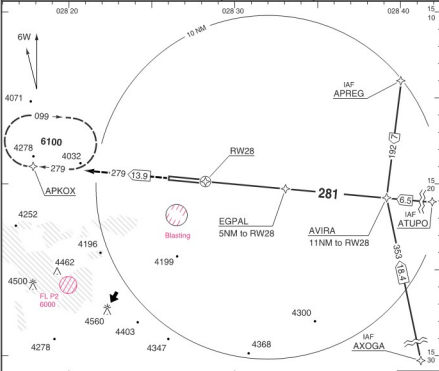
WEF 15 MAR

THIS CHART IS A PART OF NAVGRAPH NDAC AND IS INTENDED FOR FLIGHT SIMULATION USE ONLY

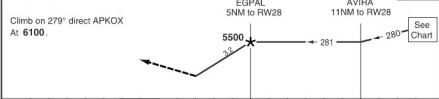
© European Aeronautical Group - 116051/ST/00

Lusaka
 ATIS 113.500 HAD
 APP 121.300 HAD
 TWR 118.100 HAD
 SRE 120.100 HAD

PAPI 3.00L
 TCH 50
 LDG 3962x46M/12998x150FT/0.2



MAP1 RW28 TA 6000

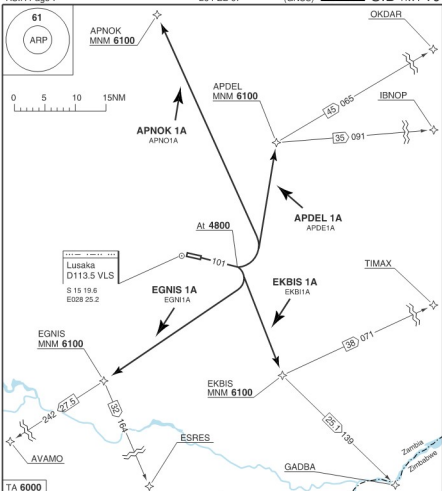


NM 7 6 5 4 3 2 1 0 1 2 3 4 5 6 7 8 9 10 11 12 13 14 NM

STATE	LNAV/VNAV (GNSS)	LNAV (GNSS)	
ACFT	C D	C	D
MIN	4090 (343)	4260 (483)	
VIS-KM	1.7	1.7	1.8
APL U/S	2.0	2.0	2.0



Not to be used below 5°C



MNM CLIMB GRADIENT: 3.3% up to 4800.

ALT RESTRICTIONS: Climb to 6100.

INITIAL CLIMB:

Climb on 101° - At 4800 - follow SID.

APDEL 1A

Turn L direct APDEL.

Cross APDEL MNM 6100.

TRANSITIONS: Direct OKDAR or IBNOP.

APNOK 1A

Turn L direct APNOK.

Cross APNOK MNM 6100.

EGNIS 1A

Turn R direct EGNIS.

Cross EGNIS MNM 6100.

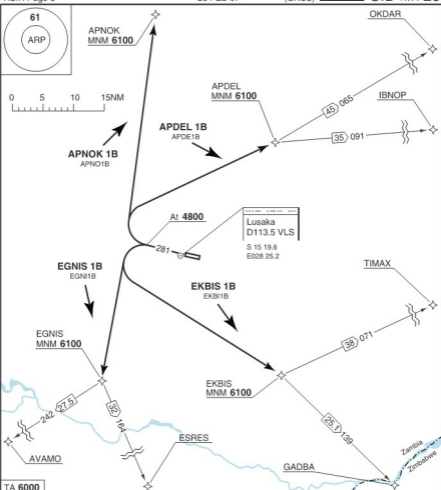
TRANSITIONS: Direct ESRES or AVAMO.

EKBIS 1A

Turn R direct EKBIS.

Cross EKBIS MNM 6100.

TRANSITIONS: Direct GADBA or TIMAX.



MNM CLIMB GRADIENT: 3.3% up to 4800.

ALT RESTRICTIONS: Climb to 6100.

INITIAL CLIMB:

Climb on 281° - At 4800 - follow SID.

APDEL 1B

Turn R direct APDEL.
Cross APDEL MNM 6100.
TRANSITIONS: Direct OKDAR or IBNOP.

APNOK 1B

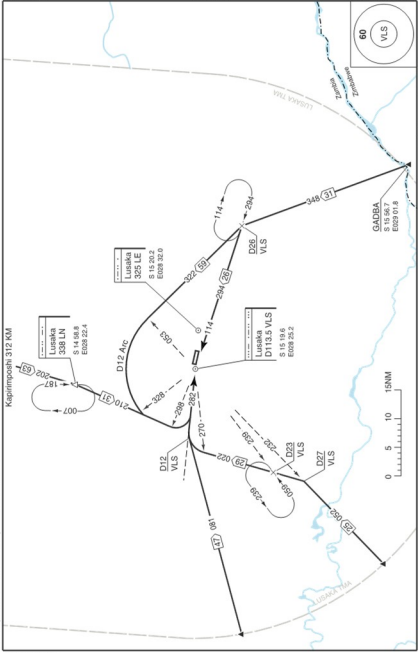
Turn R direct APNOK.
Cross APNOK MNM 6100.

EGNIS 1B

Turn L direct EGNIS.
Cross EGNIS MNM 6100.
TRANSITIONS: Direct ESRES or AVAMO.

EKBIS 1B

Turn L direct EKBIS.
Cross EKBIS MNM 6100.
TRANSITIONS: Direct GADBA or TIMAX.



© European Aeronautical Group - file01a.basa0 - G - P

Reverse side blank

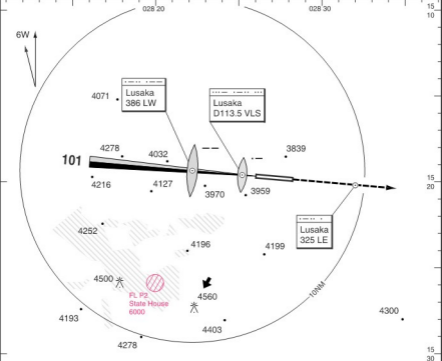
Change: New

THIS CHART IS A PART OF NAVIGRAPH NDAC AND IS INTENDED FOR FLIGHT SIMULATION USE ONLY

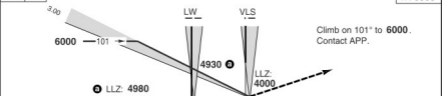
Lusaka
 ATIS 113.500 HAD
 APP 121.300 HAD
 TWR 118.100 HAD
 SRE 120.100 HAD

PAPI 3,00L
 LDG 3962x46M/12998x150FT/0.2

ILS 110.3 LO --- 101° GP 3.00



MAP: MM TA 6000



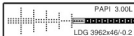
NM	GS/ KT					STATE				ILS				LLZ			
	90	100	120	140	160	ACFT		C		D		C		D			
	490	540	640	750	860	MIN	3980 (200)	4000 (221)	4060 (251)	4080 (271)	1.2	1.2	1.3	1.3			
OM	+20 s	4820	4810	4770	4740	4700	VIS-KM	1.2	1.2	1.3	1.3	1.6	1.6	1.8	1.8		
	+40 s	4660	4630	4560	4490	4420	APL U/S	1.2	1.2	1.6	1.6	1.8	1.8	1.8	1.8		
	+60 s	4500	4450	4340	4240	4130											
	OM-4080	1:50	1:39	1:22	1:10	1:02											



THR ELEV 3779 FT/AD ELEV 3779 FT Change: OBST

THIS CHART IS A PART OF MALDEN/ILS AND IS INTENDED FOR FLIGHT SIMULATION USE ONLY

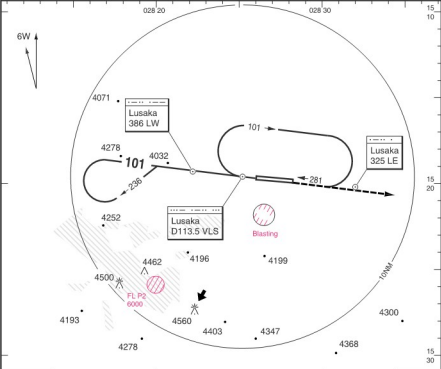
Lusaka
 ATIS 113.500 HAD
 APP 121.300 HAD
 TWR 118.100 HAD
 SRE 120.100 HAD



L
U
S
A
K
A

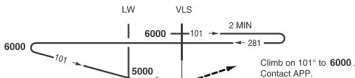
I
N
T
L

Z
A
M
B
I
A



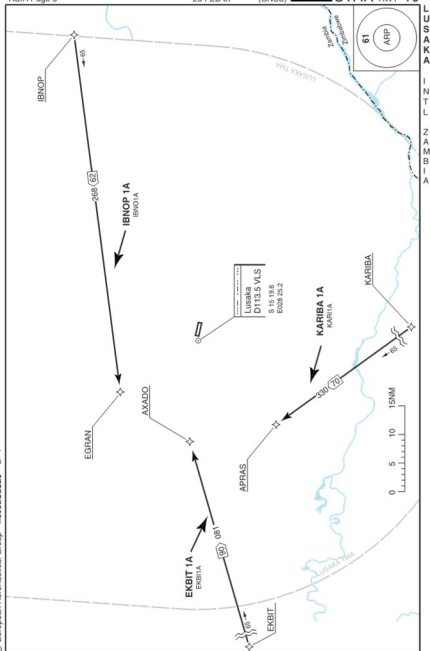
TA 6000

MAP: THR



NM	13	12	11	10	9	8	7	6	5	4	3	2	1	0	1	2	3	4	5	6	7	8	NM
GS/ KT	90	100	120	140	160	STATE		VOR+NDB															
ROD	480	530	640	740	850	ACFT		C D															
LW						MIN		4360 (551)															
						VIS-KM		2.3															
					APL U/S		2.3																
+20 s	4850	4830	4790	4760	4720																		
+40 s	4690	4650	4580	4510	4440																		
+60 s	4530	4480	4370	-	-																		
LW-4360	1:18	1:10	0:59	0:50	0:44																		





L
U
S
A
K
AI
N
T
L

Z
A
M
B
I
A

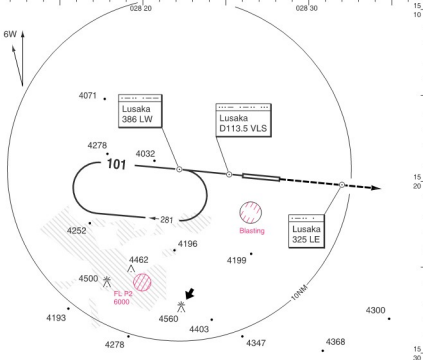
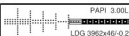
LUN - FLLS

3

05 AUG 04

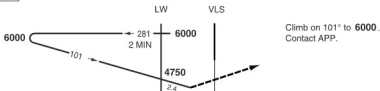
NDB - 10

Lusaka
 ATIS 113.500 HAD
 APP 121.300 HAD
 TWR 118.100 HAD
 SRE 120.100 HAD



TA 6000

MAPt THR



NM 13 12 11 10 9 8 7 6 5 4 3 2 1 0 1 2 3 4 5 6 7 8 NM

GS/ KT	90	100	120	140	160
ROD	380	420	500	590	670
LW					
+20 s	4630	4620	4590	4560	4530
+40 s	4510	4480	4420	4370	4310
+60 s	4380	4340	-	-	-
LW-4300	1:09	1:02	0:52	0:44	0:38

STATE	NDB+VOR
ACFT	C D
MIN	4300 (491)
VIS-KM	2.3
APL U/S	2.3

60

VLS

THR ELEV 3779 FT/AD ELEV 3779 FT Change: Proc, APL box, Min

THIS CHART IS A PART OF NAVIGRAPH NDAC AND IS INTENDED FOR FLIGHT SIMULATION USE ONLY

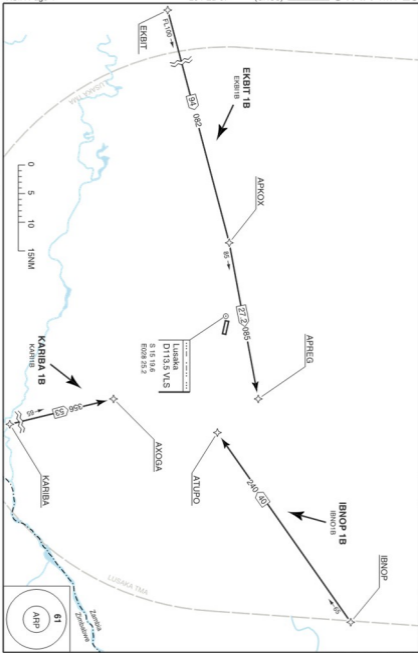
NEW PANS - OPS

© European Aeronautical Group - IIS/CS/15/500

L
U
S
A
K
A

I
N
T
L

Z
A
M
B
I
A



Change: New

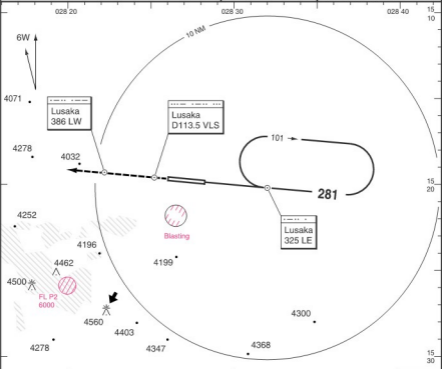
WEF 15 MAR

THIS CHART IS A PART OF NAVIGRAPH NDAC AND IS INTENDED FOR FLIGHT SIMULATION USE ONLY

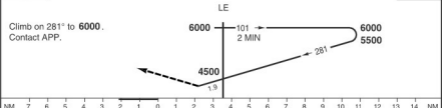
© European Aeronautical Group - EAG

Lusaka
 ATIS 113.500 HAD
 APP 121.300 HAD
 TWR 118.100 HAD
 SRE 120.100 HAD

PAPI 3.00L
 LDG 3962x46M/12998x150FT+0.2



MAP1 THR TA 6000

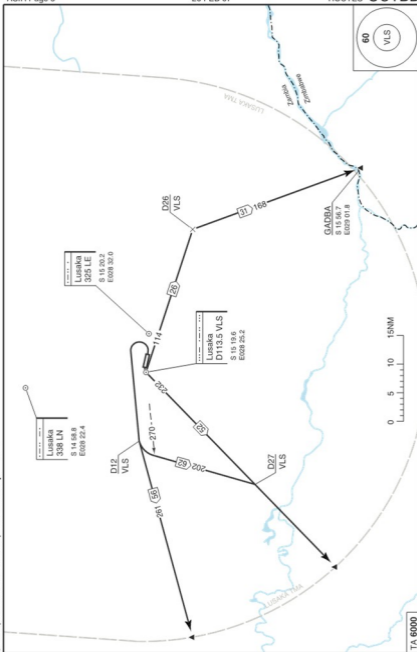


GS/ KT	90	100	120	140	160
ROD	480	540	640	750	860
LE					
+20 s	4790	4770	4740	4700	4670
+40 s	4630	4600	4520	4450	4380
+60 s	4470	4420	4310	4210	-
LE - 4140	1:38	1:28	1:14	1:03	0:55

Timetable based on passing LE at 4960 FT.

STATE	NDB	
ACFT	C	D
MIN	4140	(363)
VIS-KM	1.7	1.7
APL U/S	1.8	2.0

THR ELEV 3747 FT/AD ELEV 3779 FT Change: New print



© European Aeronautical Group - flis05d basq0 - W - P

Change: Renumbered

WEF 15 MAR

THIS CHART IS A PART OF NAVIGRAPH NDAC AND IS INTENDED FOR FLIGHT SIMULATION USE ONLY

TA 6000
Reverse side blank